

JSPS Fellowship Programmes

Yuka Kitani

International Programme Associate

JSPS London

Croatia, July 2013

JSPS Fellowship Programme to Japan

1. Postdoctoral Fellowship

(Short-term/Standard/Pathway)

2. Invitation Fellowship

(Short-term/ Long-term/ Short-term S)



Career Stage of Researchers



PhD

**6 years
after PhD**

Mid-career

Professor

**Nobel Prize
level**

**Postdoctoral
Fellowships
(Standard)**

1 - 2 years

**Postdoctoral Fellowships
(Short-term)**

1 - 12 months

(Long-Term)

61 days - 10 months

Invitation fellowships


(Short-Term)

14 - 60 days

(Short-Term S)

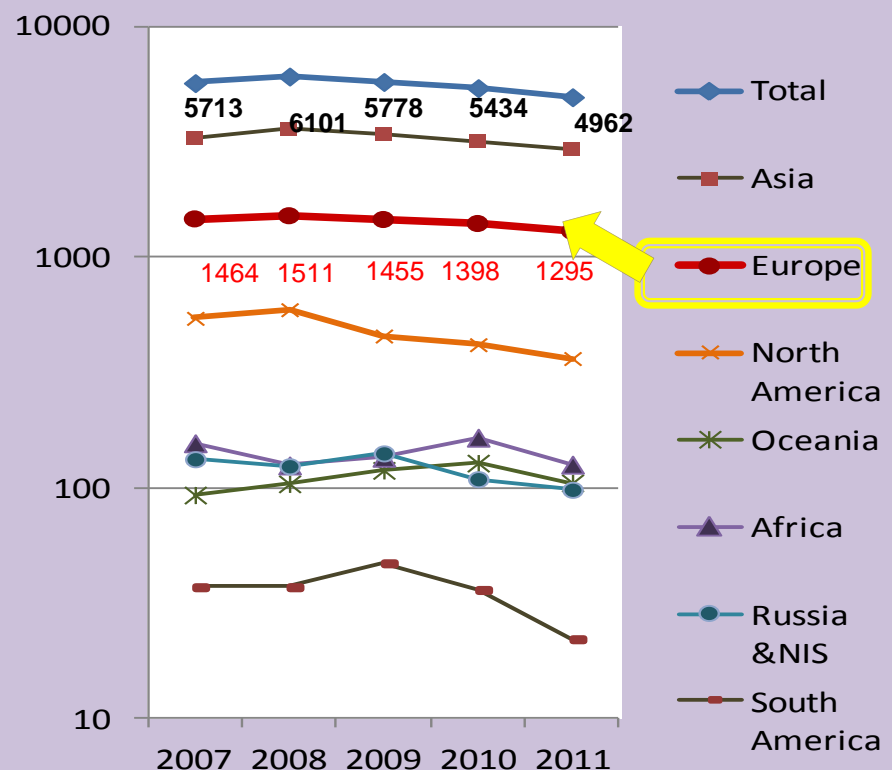
7 - 30 days

Number of newly selected fellows (By nationality)

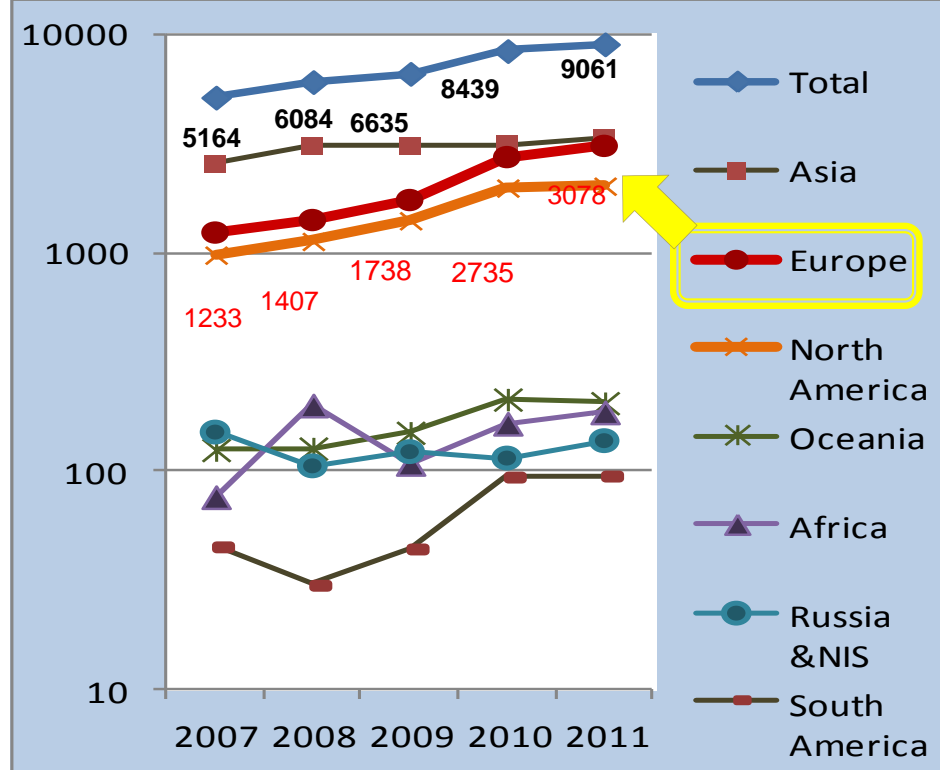
 Croatia		2009	2010	2011
Postdoctoral Fellowship		0	0	0
Invitation Fellowship	Short	1	2	1
	Long	0	0	0

Number of Researchers Exchanged

<TO Japan>



<FROM Japan>



Croatia→Japan



	2008	2009	2010	2011
Fellowship Programmes	0	1	2	1
Bilateral /Multilateral and Other Programmes	0	1	0	0

Japan→Croatia



	2008	2009	2010	2011
Fellowship Programmes	0	0	0	0
Bilateral /Multilateral and Other Programmes	3	0	7	4

Postdoctoral Fellowship

	Short-term	Standard
Who can apply?	<ul style="list-style-type: none"> • Postdocs* or PhD Students** • US, Canada, EU, Switzerland, Norway and Russia*** 	<ul style="list-style-type: none"> • Postdocs*
Duration	1 - 12 months	12 - 24 months
Coverage of Fellowship	Maintenance allowances 20,800 HRK / 2,800€ (Postdocs) (Monthly), 11,500 HRK / 1,500€ (PhD students) (Monthly)	Maintenance allowances 20,800 HRK / 2,800€ (Monthly)
	Return air ticket, Settling-in allowance, Overseas travel insurance, “Grant-In-Aid for Scientific Research” (KAKENHI) etc.	
Quota (Per year)	150****	400****

* within 6 years after PhD

** including postgraduate expected to receive a PhD within 2 years

*** Including researchers from other nationalities who have done 3 or more years at postgraduate level in these countries

**** There are separate quotas for Nominating Authorities and JSPS London

Currency exchange rate at 3 July 2013

Postdoctoral Fellowship



	Pathway to University Positions in Japan
Who can apply?	• Postdocs*
Duration	12 – 24 months → Full-time Position in Japanese University or Research Institution
Coverage of Fellowship	Maintenance allowances 22,300 HRK / 3,000 € (Monthly)
	Return air ticket, Maintenance allowances, overseas travel insurance, “Grant-In-Aid for Scientific Research” (KAKENHI) etc.
Quota FY2013 (Per year worldwide)	20

Currency exchange rate at 3 July 2013

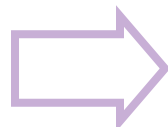
* within 6 years after PhD

Invitation Fellowship

	Long-term	Short-term	Short-term S
Who can apply?	Professors, Senior Lecturers and Readers, persons with equivalent research experience	Researchers with excellent records of achievement	Researchers with eminent records of research activities
Duration	2 (61 days) - 10 months	14 - 60 days	7 - 30 days
Coverage of Fellowship	Maintenance allowances 21,200 HRK / 2,800 € (Monthly)	Maintenance allowances 1,040 HRK / 140 € (Daily)	Maintenance allowance 2,410 HRK / 320 € (Daily)
	Return air ticket, Overseas travel insurance, Domestic research travel allowance, Research expense, Host's cooperation allowance		
Quota (Per year)	80	280	4 - 6

How to apply (to JSPS Tokyo)

- Postdoctoral Fellowship (Short-term/Standard/Pathway)
- Invitation Fellowship (Long term/Short term)



Host Institution
in Japan



JSPS Tokyo
Japanese peer reviewers

Fellowship Programme	Award start period	Application deadline	Call(s) per year
Postdoctoral (Short-term)	Apr 2015 - Mar 2016 Jul 2015 - Mar 2016 Oct 2015 - Mar 2016 Jan 2016 - Mar 2016 (expected)	Oct 2014 Jan 2015 Apr 2015 Jul 2015	4calls/year October, January, April, July (expected)
Postdoctoral (Standard)	1 Apr 2014 - 30 Sep 2014 1 Sep 2014 - 30 Nov 2014	2-6 Sep 2013 1-9 May 2014	2 calls/year May and September
Postdoctoral (Pathway)	1 Oct 2014 – 31 Mar 2015 (expected)	May 2014 (expected)	1 call/year May (expected)
Invitation (Long-term)	1 Apr 2014 – 31 Mar 2015	2-6 Sep 2013	1 call/year September
Invitation (Short-term)	1 Apr 2014 - 31 Mar 2015 1 Oct 2014 - 31 Mar 2015	2 -6 Sep 2013 1-9 May 2014	2 calls/year May and September

Search for Researcher in Japan

[日本語](#) | [English](#) | [Sign up](#) | [Login](#)


◀ReaD & ▶Researchmap

[Home](#) ▶ [Researcher Search](#) [Community Search](#)

Researcher Search

Select items to narrow your search results

Area



- Hokkaido
- Tohoku
- Kanto
- Chubu
- Kinki
- Chugoku
- Shikoku
- Kyushu
- etc

Institutions

National Institutes

Name

Affiliation

Research keyword

Research area Main category -- not specified -- Sub-category -- not specified --

Last modified in

Search

Clear

🔍 Researchers in Japan

Currently, the most numerous is **Informatics researcher.**

▪ Informatics 4.3%


▪ Literature 4.1%

▪ Basic medicine 4.0%

▪ Clinical internal med... 4.0%


▪ Electrical and electr... 3.5%

👤 Researchers




[TAKIZAWA Makoto](#)

NO IMAGE




[Ichizo NISHINO](#)

NO IMAGE



[FUJII Sadakazu](#)



Search for a Researcher in Japan

➤ JARC-NET



JSPS 独立行政法人
日本学術振興会
Japan Society for the Promotion of Science

Text Size S M L Search [Site Map](#) [Edit this page in IBE](#)

一般の方へ 研究者 / 機関担当者の方へ **English**

About Us Programs How To Find Us/Contact

[TOP](#) > [Programs](#) > Japan-Affiliated Research Community Network JAPANESE

MENU

- [Top](#)
- [To register in JARC-Net](#)
 - [Targeted Users](#)
 - [Information Category](#)
 - [Terms of Use & Privacy Policy](#)
 - [Sample & Leaflets](#)

[JSPS Home](#)
[Japanese](#)

CONTACT

International Program
Department,
Japan Society for the Promotion
of Science

[+81-3-3263-1839](tel:+81-3-3263-1839)
[+81-3-3234-3700](tel:+81-3-3234-3700)
jarc-net@jsps.go.jp



Japan-Affiliated Research Community Network

The Japan-Affiliated Research Community Network ("JARC-Net") is a database of researchers and experts who are interested in the research cooperation between Japan and other countries/areas. By registering, you will be able to search and browse other members' profiles.

JARC-Net helps you to find colleagues and new research partners, and to build and strengthen research networks.

JARC-Net

[Sign-in JARC-Net](#) [Member Registration](#)

What's New

05/27/2011 Japan-Affiliated Research Community Network(JARC-Net) was updated. [More](#)

[Page Top](#)

We're looking forward to your visit !



If you have any questions...

enquire@jsps.org

For more Information...

<http://www.jsps.org/>

